

Association Governance



National Education Association (NEA)

2019 Representative Assembly Statewide, Regional, or Retired Delegate *Nomination Form*

For nomination of self or another Arizona Education Association/National Education Association Active, Life or NEA-Retired member to the NEA Representative Assembly

Nomination Form must be submitted to the Arizona Education Association headquarters on or before 5 PM, January 25, 2019. Nomination Forms submitted after 5 PM on January 25, 2019, will not be accepted.

Candidate _____

Address _____ City _____ State _____ ZIP _____

Local Association _____ Home Email _____

Telephone (H) _____ (W) _____

- Candidate for the office of:
- NEA Statewide Delegate Term: One Year
 - NEA Regional Delegate Election District _____ Term: One Year
 - NEA-Retired Delegate Term: One Year

Candidates for National Education Association Statewide, Regional, or Retired Delegates may submit a statement NOT TO EXCEED THE 50-WORD LIMIT to be distributed to eligible voters. Please attach the candidate statement to this form.

In all campaign statements, the articles "a," "an," "to," and "NEA," "AEA," and the local association name or abbreviation shall be counted as a single word. Campaign statements that exceed appropriate limitations will be cut by striking complete sentences from the end of the statement until the statement meets the word limit.

The Arizona Education Association candidates for Statewide, Regional, or Retired Delegates may provide a current photo, if it is to be published with their statement. Photos will not be returned. The Arizona Education Association does not maintain a photo file from year to year.

The undersigned has read and approved the attached statements about the candidate.

I, the undersigned, do accept the nomination. By selecting the "I Accept" button, I Accept *Signature of the Candidate is mandatory.* you are signing this nomination form electronically. You agree your electronic signature is the legal equivalent of your manual signature on this nomination form. Date _____

**Nomination form
and statement must be
submitted on or before 5 PM
on January 25, 2019.**

Nomination form may be submitted via mail, hand-delivery, fax, or email to:
AEA Elections Committee
345 E. Palm Lane, Phoenix, AZ 85004
FAX: (602) 240-6887
Email: chris.mayer@arizonaaea.org

Be part of the largest democratic body in the world!

Be a Delegate to the 2019 NEA-RA

Almost 100 AEA members become a part of the world's largest deliberative body—8,000 strong—when they are elected by their colleagues to represent them at the NEA Representative Assembly each year. The NEA-RA is the governing body of the 3 million members of NEA. The 2019 annual meeting, to be held July 3-7 in Houston, TX, sets objectives, passes a budget, determines direction and votes on guiding principles for the Association, the largest professional organization and union in the country.

You can be part of this exciting process by running as an AEA statewide delegate; regional delegate; retired delegate; or as a delegate representing your local association. Nominate yourself to be a statewide, regional, or retired delegate by completing the form on page 10. To run as a candidate representing your local, contact your local president. Local elections are usually held in the early spring, but vary from local to local.

AEA-Retired members may be eligible for up to three delegates, depending on the January 15, 2019 membership figures.

AEA is allotted a certain number of delegate positions based on the size of statewide membership. NEA-AEA Active members will vote for at least one Statewide Delegate and 14 Regional Delegates depending on the January 15, 2019 membership figures. In the event a candidate is elected to both a regional and statewide position, he or she must

declare within ten days of official notification which position the candidate will accept. If a delegate fails to respond within ten days of the date of the official notification, he or she will be declared elected as a regional delegate.

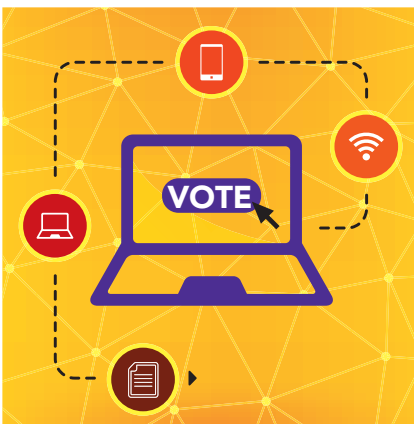
Nominees must complete the Delegate Nomination Form on page 10 and must submit it on or before 5 PM on January 25, 2019. Forms may be submitted via mail, hand delivery, fax, or email. Please see the instructions on page 10.

Ethnic minority members are especially encouraged to run for AEA leadership positions.

Regional Delegates:

Please look for your local association's name and the corresponding Election District (A through N) before completing your nomination form.

IMPORTANT: Voting Process



AEA members will vote online for their 2019 NEA-RA Statewide, Regional, and Retired delegate representatives. Online voting will open on March 5, 2019 and close on April 24, 2019. Individuals may request paper ballots to cast their votes during this period.

If you have questions about online voting, please contact Chris Mayer, staff liaison to the AEA Elections Committee at 602-264-1774 or 800-352-5411, ext. 143.

AEA Elections Timeline

November 2018-January 2019

- Nominations accepted for NEA-RA delegates (statewide, regional, retired, local)
- Local associations should conduct a call for nominations for local delegate positions to the AEA Delegate Assembly and NEA-RA

2019

January 25

Deadline for NEA-RA statewide, regional, and retired delegate nominations

February 4-8

NEA RA election reports and AEA Delegate Assembly election reports emailed to local presidents

March 1

AEA President, Vice President and Treasurer nominations

Deadline for AEA Board of Director nomination publication

March 5-April 24

Online voting available to all members for NEA-RA statewide, regional, and retired candidates

March 26

Deadline to report 2019 Delegate Assembly elected delegates

April 24

Deadline to report 2019 NEA-RA local association elected delegates and successors

May 10-11

2019 Delegate Assembly, Scottsdale Resort

July 3-7

2019 NEA-RA, Houston, TX

NEA Representative Assembly

Election Districts for 2019 NEA-RA Regional Delegates

Members will elect 1 Regional Delegate from each Election District, unless otherwise noted.

Election District A

ASU (Tempe)
Kyrene EA
Kyrene ESPA
Paradise Valley SEA
Tempe Elementary EA

Election District B

Balsz
Chandler EA
ESP of Chandler
Gilbert EA

Election District C

Apache Junction EA
Combs EA
Coolidge EA
Florence EA
Fountain Hills EA
Higley EA
Maricopa EA
Mobile Elem
Queen Creek EA
Scottsdale EA
Scottsdale SPA
Stanfield EA
Tempe Classified Assn

Election District D

EV Inst of Tech EA
Mesa EA
MESPA
Tempe Secondary EA

Election District E 2 Regional Delegates

Deer Valley EA
Peoria EA
Phoenix UHSD CEA
Phoenix UHSD CTA

Election District F

Paradise Valley EA

Election District G

Glendale (Elem) EA
Glendale Union EA
Madison District CTA
Phoenix Elem CTA
Phoenix Elem ESP Assn
Washington Dist EA

Election District H

Alhambra Dist EA
Cartwright EA
Creighton EA
Fowler Dist TA

Isaac Dist EA
Roosevelt EA
Wilson Elem CTA

Election District J

Agua Fria Dist EA
Buckeye ASE-UHS
Buckeye EA
Deer Valley ESPA
Dysart EA
Dysart ESP
EA of Avondale
Laveen EA
Liberty CTA
Litchfield Dist EA
Littleton EA
Murphy EA
Osborn EA
Pendergast Elem EA
Peoria ESP
Riverside EA
Saddle Mountain EA
Tolleson EA
Tolleson UHSD EA
Union EA

Election District K

Ash Fork EA
Bagdad EA
Beaver Creek EA
Blue Ridge EA
Bullhead City Elem
Camp Verde EA
Canon Elementary
Cave Creek EA
Cedar EA
Chinle EA
Chino Valley EA
Clarkdale-Jerome EA
Coconino Comm Coll
Colorado River EA
Concho EA
Cottonwood Oak Creek EA
Flagstaff EA
Flagstaff Ed Supt Assn
Fredonia-Mocasin EA
Ganado EA
Globe EA
Grand Canyon EA
Hayden-Winkelman EA
Heber-Overgaard EA
Holbrook EA
Humboldt EA
Joseph City CTA

Kayenta EA
Kingman EA
Lake Havasu City EA
Littlefield EA
Maine Consolidated EA
Mayer EA
Miami Area EA
Mingus Union EA
Northern Ariz Univ
Page EA
Payson EA
Pinon EA
Prescott CEA
Prescott EA
Red Mesa EA
Round Valley EA
San Carlos EA
Sanders EA
Sedona EA
Seligman EA
Show Low EA
Snowflake EA
St Johns EA
Superior EA
Support Staff Cave Creek
Tonto Basin Elem
Tuba City Unified EA
Whiteriver EA
Williams EA
Window Rock EA
Winslow EA
Young EA

Election District L

Amphitheater EA
Casa Grande EA
Casa Grande Elem EA
Casa Grande UHSSSA
Eloy EA
Flowing Wells EA
Marana EA
Marana ESP
Sunnyside CEA
Sunnyside EA

Election District M

Tucson EA

Election District N

AEA/Ariz Western Coll
Aguila Elem
Altar Valley EA
Antelope EA
Arizona Sch DBEA

Ash Creek EA
Benson EA
Bisbee EA
Bouse Elementary
Catalina Foothills EA
Clifton EA
Cochise Elem
College Faculty Assn of
Pinal Co
Congress Elementary
Continental EA
Crane EA
Dateland Elem TA
Double Adobe EA
Douglas EA
Duncan Unif
Eastern Arizona EA
Educ Assn of Ajo
Elfrida Elem
Ft Huachuca EA
Ft Thomas EA
Gadsden EA
Gila Bend EA
Hackberry Elem
Indian Oasis CTA
Mammoth-San Manuel
CTA
Mammoth-San Manuel
ESP
Maricopa Cnty Comm
Coll Dist EA
Maricopa Cnty Rgnl Dist
Mary C. O'Brien
McNeal Elementary
Mohave Valley EA
Mohawk Valley EA
Morenci EA
Morristown Elem
Naco EA
Nadaburg EA
Nogales ESPA

Oracle EA
Palominas Elem
Patagonia Elem Assn
Patagonia UHS ACT
Pearce Elem
Phoenix Day School
Picacho Educ Group
Pima Accom Dist
Pima Comm Coll EA
Prof Educ of Nogales
Prof Educ of Parker
Quartzsite
Ray EA
Sacaton EA
Safford EA
Sahuarita EA
San Simon Unif
Santa Cruz Elem (#28)
Santa Cruz Eloy EA (#8)
Santa Cruz Valley EA (#35)
Sierra Vista CTA
Sierra Vista ESPA
Solomonville EA
Somerton EA
Sonoita EA
St David Professional Assn
Tanque Verde TA
Thatcher
Toltec EA
Tombstone Dist #1 EA
Topock Elem
Tri Valley EA
Univ Arizona
Vail EA
Wickenburg EA
Willcox EA
Yuma ESS
Yuma Elem EA
Yuma Elem ESP
Yuma Union EA
Yuma Union ESP

Student Delegate to NEA-RA

The Arizona Education Association's student members of the National Education Association-Student Program (NEA-SP) will elect one delegate to the National Education Association Representative Assembly. Delegate entitlement will be determined by membership as of March 15, 2019. At that time, the Arizona Education Association's Elections Committee will proceed with the nomination and election processes to elect Arizona's Student Delegate.